

DATA SHEET

TESE KPL. Extrusion – article number 18021

Product characteristics

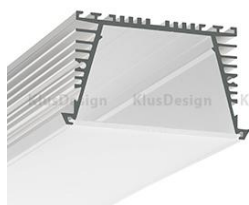
Technical extrusion designed for making precise grooves in the surfaces of drywall and drywall ceilings. Its unique construction allows the mounting of the SEKOMA extrusion which can be achieved with the use of BLOCK springs (include 2 pairs of springs per 1 m of the extrusion). The BLOCK springs are put into special grooves in the TESE extrusion. The SEKOMA extrusion is then mounted by snapping it into the TESE extrusion.

Additional accessories for the TESE mounting base are polypropylene end caps. The TESE extrusion is mounted by screwing the collars of the extrusion to the beam structures of walls and ceilings. The distance of the collar from the upper edge is equal to the standard thickness of 12 mm drywall.

Applications

Technical extrusion that enables the recessed mounting of the SEKOMA extrusion.

Products related to the Extrusion



extrusion SEKOMA (B6595)



end cap TESE (24047)



spring BLOK (42731)

Technical specification

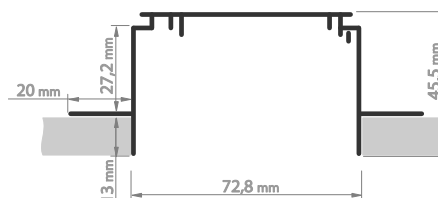
Available lengths

1 m / 2 m / 3 m* (can be cut to any size)

*available by arrangement with the sales department of KLUŚ

Material

body – aluminum, end cap – polypropylene (PP), spring – steel



www.KlusDesign.eu

* Uprzejmie informujemy o zastrzeżeniu sobie prawa do zmian asortymentowych i modyfikacji produktów.
We reserve the right to change and modify our products.

KLUŚ